

Breast Cancer: Not a “Local” Disease

Steven Castille, Bsc, MS, DNM

Liteon Institute of Holistic Healing, Lafayette, LA, USA

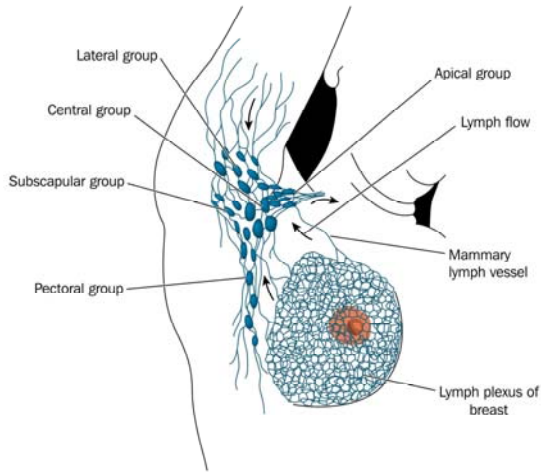


Figure 1: Major lymph nodes near the breast tissue

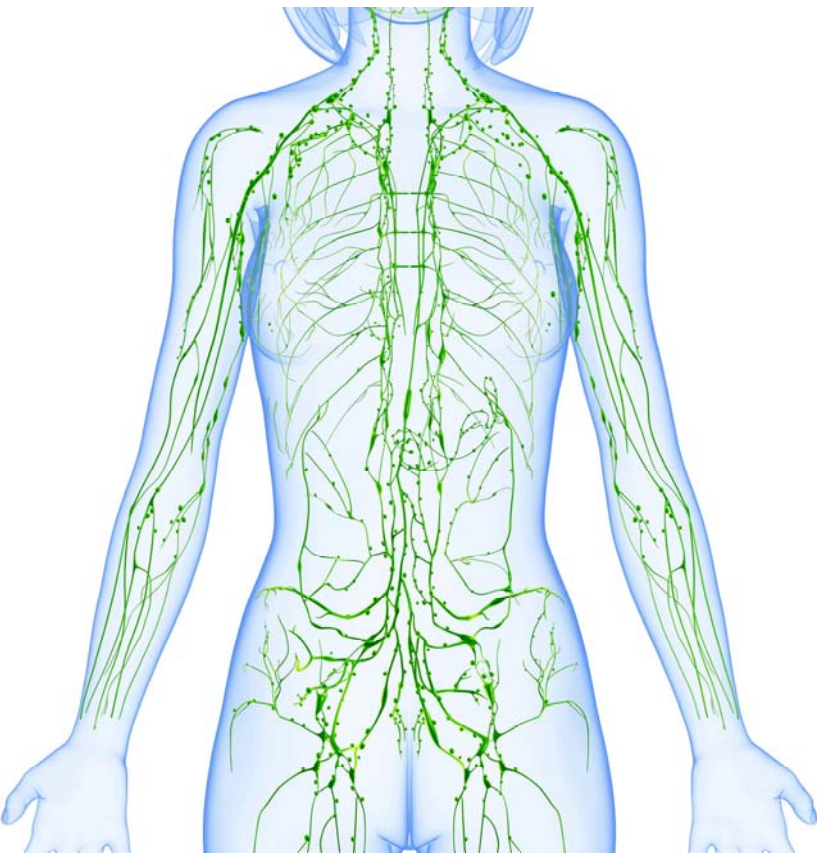


Figure 2: Lymphatic fluid flows through lymphatic vessels. Lymphatic vessels transport lymph fluid through lymph nodes throughout the body.

Background

Advances in thermography research have shown that breast cancer is not a local disease, but a sign of failing, or failed, regional and global homeostatic regulation.

Many people don't realize that there are several functional systems of the body that are highly influential in breast pathology. We must assess lymph origin and stress in the lymphatic system, endocrine (glandular) imbalance, metabolic influences from sub-optimal organ function (liver, pancreas, kidney, intestines), and suspicion for heavy metal toxicity, as well as the possibility of distant focal infections, such as tonsil or dental infections.

Assessing the body's *terrain* is another essential key in determining areas of dysfunction. Our terrain is our body's whole internal environment, including the connective tissue and the interstitial fluids comprised of protein, enzymes, minerals, and neuroendocrine transmitters.

Unhealthy terrain is created over years of disturbances in the body's electromagnetic field, chemical toxins, negative thoughts, untreated trauma including medical procedures, and acid/alkaline imbalances, which provoke fungal, bacterial or mycobacterial progression. All of these affect our overall immunity, and our overall immunity affects our breast health.

Thermography: A Proven Diagnostic Track Record

In a German study, 54% of breast cancer patients were correctly diagnosed by history and physical examination. The number rose to 76% when mammography was added. However, when *thermography* was used, the accuracy of diagnoses rose to 92%.

We encourage you to take control of your health. Have your thermography screening to create your own unique health profile. Seek a health-care practitioner who understands the importance of *prevention* and identifying the *underlying causes* of disease.

Blocked, Hot, Cold, or Toxic

Thermography scanning of the breast tissue is painless, non-radiating, and takes about 30 minutes. A hot spot indicates inflammation of the tissue region. A blocked spot indicates failure of the point to compensate to a temperature change, possibly a sign of a tumor or a cyst. A toxic spot is one that overreacts to the temperature change, a sign that can occur if toxins are present such as pesticides, or other chemical exposures. A cold point is excessively cold to begin with and can be seen in several neoplastic (cancerous) diseases such as DCIS (differential carcinoma in situ) or long-present calcifications.



Dr. Steven T. Castille, Bsc, MS, DNM
Biochemist, Clinical Herbalist, and Doctor of Natural Medicine

Director of Natural Medicine and Nutrition Science
Research, Liteon Institute of Holistic Healing

Advancing the Science of Alternative, Natural, and
Integrative Medicine